

DTM- Compact PTP/PTMP 4G
LTE Link

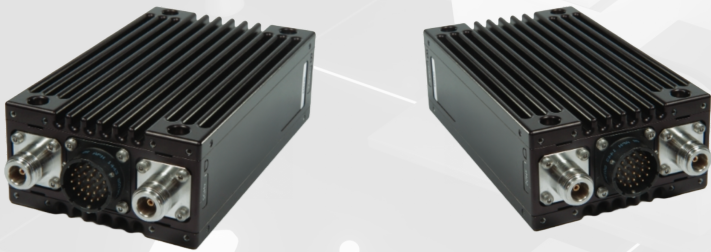
DTM 4G



Compact, multi-frequency PTP/PTMP/MESH
Wireless link based on a proprietary communications protocol with 3
transparent ethernet and multiple TTL ports.

DTM is based on the **4G LTE TDD/FDD** mobile communication standard,
making it exceptionally well suited for industrial and surveillance
applications in challenging environments, while requiring virtually no setup
and extra testing equipment. Operating in the 700-900MHz, 1.3-1.4GHz and
2.4GHz frequency bands with 500mW of output power, DTM is capable of
creating wireless networks well in excess of 15KM with maximum
throughput of 30MBPS. External amplifiers can also be used to extended
coverage to 150KM+ LOS

DTM further enhances RF flexibility by allowing users to adjust channel
bandwidths between 1.4, 3, 5, 10, and 20MHz. By incorporating optional 5
or 10-watt external amplifiers, DTM can serve as an LTE Base station for
municipalities, offering coverage up to 30KM from a radio tower. DTM
leverages LTE standard protocols, including AES 128 Encryption, dynamic
frequency selection, and adaptive modulation. It has been specifically
optimized to meet the requirements of mission-critical video applications
and provides customizable Quality of Service (QoS) settings for end users.



Low SWaP



Performance RF



Fast Integration



Long Range

www.jpe-wireless.com

DTM 4G



Frequency Range	700-900MHz, 1.3 - 1.4GHz, 2.4GHz (Auto Frequency selection or manual input with 100KHz tuning steps)
Transmit Power	20-25dBm on all bands, with optional 30dBm (1W), 33dBm (2W) Or 37dBm (5W external amp)
RX Sensitivity	700-900M: 10Mbps -103dBm ; 5MHz -106dBm ; 3MHz -108dBm
	1.3-1.4G: 10Mbps -103dBm ; 5MHz -106dBm ; 3MHz -108dBm
	2.4G: 10Mbps -102dBm ; 5MHz -104dBm ; 3MHz -106dBm
Channel Bandwidth	1.4MHz/3MHz/5MHz/10MHz/20MHz
Modulation	QPSK, QAM16
Over the air Bitrate	Up to 30Mbps at QAM16/20MHz
Operating Modes	AP/STA/Repeater (Limited to 16 clients per AP for optimal performance)
Range with 3dBi omnis	15km+ LOS, 500 Meter+ NLOS on UHF/1400MHz
Ethernet Port	RJ45 *3
UART Port	UART(Data)*1 ; UART(Config)*1
Power Input	7-24VDC
Power Consumption	3.5W
Dimensions (bare board)	70x50mm (35g)
Operating Temperature	-40 to +40C
Config	WEB GUI, TTL

